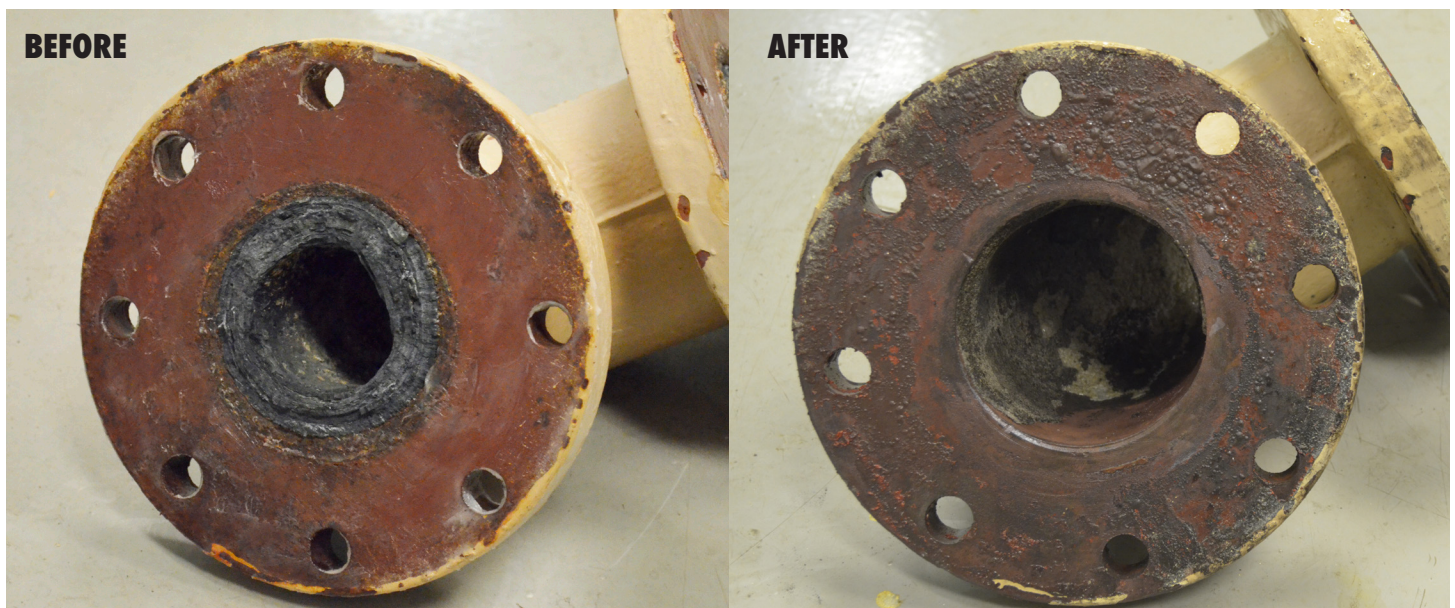


VIVIANITE REMOVAL FROM WWTP PIPING

A wastewater treatment plant (WWTP) had a severe buildup of vivianite throughout 175 feet of 4" diameter piping. Often in wastewater treatment, vivianite and struvite are menacing deposits which form and drastically reduce flow. The deposits are likely to be present in turbulent areas such as elbows and bends in the line. Both vivianite and struvite can completely restrict flow if not periodically removed from equipment and piping.

A 90 degree pipe section containing a substantial amount of vivianite deposit (>1" thick) was provided to Apex Engineering Products for testing and evaluation. Through laboratory tests it was determined that a concentration of 100% **RYDLYME** was required to effectively dissolve this particular vivianite deposit. The facility proceeded with a full system cleaning as outlined below. Scale deposits may not accumulate uniformly throughout a system. Every site's scale composition will vary. Please contact Apex for assistance in providing a safe chemical solution.



CHALLENGE

Vivianite had restricted flow in the system's 4" by 175' pipe.

SOLUTION

Circulation of **RYDLYME** at 100% concentration for 13 hours through 4" 90° pipe.

RESULTS

After the 13 hours of **RYDLYME** circulation, the vivianite was dissolved and the flow rate had tripled!