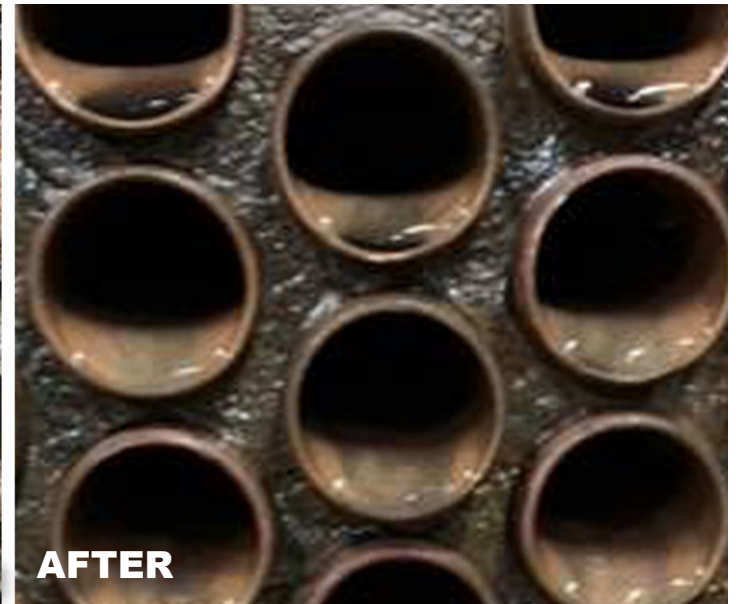


## CONTRACTOR CHILLER CONDENSER TUBE CLEANING

A mechanical contractor was tasked to complete a condenser barrel cleaning on a 250 ton chiller. The chiller was having issues with the approach temperature and was operating inefficiently. Based on previous experience, the contractor chose **RYDLYME** to dissolve the water scale from the chiller's condenser tubes via circulation.

Fifty gallons of **RYDLYME** was circulated for five hours and then inspected - due to the severity of the scale deposits, an additional fifty gallons of **RYDLYME** was circulated to dissolve all of the efficiency robbing barrier. After circulation and final inspection, the chiller's condenser tubes were found to be restored to bare metal and their copper shine. The approach temperature prior to the **RYDLYME** cleaning were 15°F. After the **RYDLYME** cleaning the approach temperature were reduced to 6°F! The customer was thrilled to have the equipment operating efficiently once again, saving money on their energy usage.



### CHALLENGE

A 250 ton chiller afflicted with water scale deposits had approach temperature 10°F above normal.

### SOLUTION

A total of 100 gallons of **RYDLYME** was circulated through the chiller's condenser tubes for 13 hours due to scale severity.

### RESULTS

Approach temperature was restored to 6°F and the customer was delighted. Remaining chillers in the facility will utilize **RYDLYME** and are scheduled to return approach temperature to normal.